

# Purina® Equine Adult® Horse Feed

WITH

**OUTLAST®**

**GASTRIC SUPPORT  
SUPPLEMENT**

## COMPLETE FEED WITH HAY BUILT IN FOR MATURE HORSES

### CONTROLLED STARCH & SUGAR

Formulated without corn or molasses for horses sensitive to soluble carbohydrates. Replacing some or all of the forage can provide more control over the starch and sugar in the horse's diet.

### CONSISTENT NUTRIENT INTAKE

Controlled diet to address nutrient variability of hay or pasture and promote consistent intake.

### HEALTHY BODY CONDITION

Calibrated to the needs of easy keepers and mature pleasure horses with Outlast® Supplement for gastric health.

### PALATABLE, DIGESTIBLE PELLETS

Formulated with vitamin and mineral fortification to meet to meet 100% of nutrient requirements for overall health.\*

### BUILT-IN FORAGE

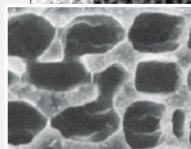
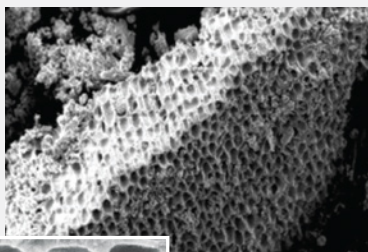
High-quality hay built in. Can be used to completely replace the forage in your horse's diet or as a hay stretcher when quality hay is scarce.



### OUTLAST® SUPPLEMENT

Decreases in forage intake and thus, saliva production can mean increased risk for gastric discomfort.

Proprietary mineral complex and unique honeycomb structure of Outlast® supplement enhances its capacity to support proper gastric pH.



Electron microscope images showing the porous structure of the proprietary mineral complex



\* When fed as directed, with free-choice or added salt, based on Nutrient Requirements of Horses, Sixth Revised Edition – 2007, published by the National Research Council.



FEED GREATNESS®

## FEEDING DIRECTIONS

### RECOMMENDATIONS FOR THE MAINTENANCE OF YOUR ADULT HORSE

**Weight management program:** Feeding Purina® Equine Adult® horse feed at a reduced rate may help horses which are obese. Begin by cutting the recommended feeding rate by 10%. Continue to adjust the rate until your horse reaches the desired weight, then return to the feeding rate that is recommended for your horse's weight and lifestyle.

**Miniature horses and ponies:** Purina® Equine Adult® horse feed is an ideal complete feed for miniature horses and ponies at maintenance and light work activity levels. For feeding directions for miniature horses and ponies, please contact your Purina® horse feed retailer, a Purina® Sales Representative or our Customer Service Department.

**Winter feeding:** In the winter, the amount of feed may need to be increased by 10-15% to offset the increased calorie requirements of maintaining body condition.

**Every horse is unique.** After observing the horse for a period of time, you may want to increase or decrease the daily feeding amount of Purina® Equine Adult® horse feed by up to 10% to obtain desired overall body condition and appearance. Purina® Equine Adult® horse feed may be fed as a complete feed because it is formulated with high-quality roughage. You may feed with or without hay or pasture per directions.

### FEEDING EQUINE ADULT® HORSE FEED WITHOUT FORAGE

Amount to be fed daily when **no forage** is fed along with Purina® Equine Adult® horse feed.

LIFESTYLE	WEIGHT OF HORSE IN POUNDS		
	800	1,000	1,200
	Equine Adult® Horse Feed (lbs/day)		
Maintenance – Minimum Activity	10.00	12.50	15.00
Maintenance – Average Activity	11.00	13.75	16.50
Maintenance – Elevated Activity	12.00	15.00	18.00
Light Work	13.25	16.50	19.75
Early Gestation (first 250 days)	11.25	14.25	17.00

**Every horse is unique.** That's why the recommended feeding rates Purina suggests for Equine Adult® horse feed may need to be increased or decreased by up to 10-15% to keep your horse in optimal body condition.

A 6 lb meal of Equine Adult® Horse Feed supplies a full serving of Outlast® Supplement.

### FEEDING EQUINE ADULT® HORSE FEED WITH FORAGE

Good quality hay or pasture may be fed along with Purina® Equine Adult® horse feed. When fed with hay, reduce about 1.0 lb for each 1.5-2.0 lbs of hay offered.

Do not feed less than 0.6 lbs per 100 lbs body weight of Purina® Equine Adult® horse feed per day to meet minimum daily requirements of protein, vitamins and minerals.

## NUTRIENT COMPOSITION

Crude Protein (min)	11.00%
Lysine (min)	0.70%
Methionine (min)	0.20%
Threonine (min)	0.40%
Crude Fat (min)	3.00%
Crude Fiber (max)	25.00%
Acid Detergent Fiber (ADF) (max)	30.00%
Neutral Detergent Fiber (NDF) (max)	46.00%
Dietary Starch (max)	10.00%
Sugars (max)	5.00%
Calcium (Ca) (min)	0.80%
Calcium (Ca) (max)	1.30%
Phosphorus (P) (min)	0.50%
Copper (Cu) (min)	40.00 ppm
Selenium (Se) (min)	0.30 ppm
Zinc (Zn) (min)	120.00 ppm
Vitamin A (min)	3,000 IU/lb
Vitamin D <sub>3</sub> (min)	600 IU/lb
Vitamin E (min)	80 IU/lb



For more information, contact your local Purina retailer or visit [purinamills.com/horse-feed](http://purinamills.com/horse-feed).



FEED GREATNESS®